

# AAW

**Pumps Motors Controls**  
Austin Armature Works, LP • Buda, Texas

**24Hour Emergency Service 1800 365 6045**

## Sales

- VFD's
- Turbine Pumps
- Submersible Pumps
- Centrifugal Pumps
- Electric Motors
- Control Panels
- Controls
- Blowers
- Aerators



**ABB**

**TECO**  **Westinghouse**

**WEG**

**BALDOR**  
A MEMBER OF THE ABB GROUP

**Hydroflo pumps**

**LEESON**   
**VAGON**  
DRIVEN BY DRIVES

**LAFERT NORTHAMERICA** 

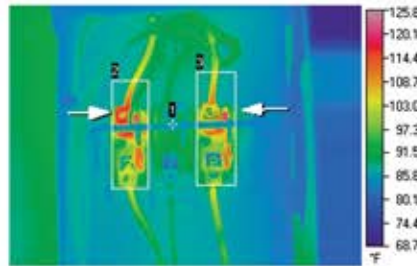
## Complete Industrial System design and installations

## Services

- Pump system design
- Pump/Motor removal & inst.
- Troubleshooting
- Electrical Contracting
- Electrical service
- Laser alignments
- On site balancing
- Motor testing & repair
- Maintenance contracts
- Thermal Imaging
- Welding
- Machining

## Motor Modifications

- Shaft grounding Rings
- Shaft INPRO Seals
- Space Heaters
- Stator RTD's
- Thermistors / Thermostats
- Bearing RTD's
- Bearing change
- SS Breather Drains
- Alternate Grease
- Epoxy Paint Finish
- New Shafts (Stainless, 4140, change size, keyless)



To see more visit us at:

[www.aawems.com](http://www.aawems.com)



**With all the Electro Mechanical Services in one place, AAW will save you time and money.** Our services include industrial electrical contracting, trouble shooting, thermal imaging, on site laser alignments, and annual MSHA ground fault testing. AAW serves all types of commercial and industrial markets, with emphasis on Power Generation, Water and WasteWater, Heavy Manufacturing, Surface Mining, Cement Production, and Oil and Gas Production.

### **PUMPS** and pump system design

AAW can provide applications engineering services to meet your specific requirements. With a full service department and technical service team to maintain the serviceability of your new or existing equipment. We have small and large crane trucks to remove or install new pumps and motors.

Our technicians can laser align and perform vibration analysis on site, we can even go a step further and balance your equipment on site. We stock **SULZER / ABS and HYDROFLO**

### **MOTORS** new motors and repairs, including rewinding and with full machining capabilities

We stock **TECO WESTINGHOUSE, WEG, LEESON, A.O. SMITH, BALDOR** and we have qualified sales representatives with years of experience to assist you with your new motor needs.

Our electric motor repair shop has the ability to rewind AC and DC motors, hollow shaft Motors, generators, armatures and variable frequency motors. Our machine shop allows us to machine, worn motor shafts and end brackets, expediting turnaround. New shafts from the same or upgraded types of steel can be manufactured in our facility to replace your existing shaft

Our mechanical department can service and repair a full range of electrical and mechanical equipment like gear-box repairs, welding and anything else your business needs.

### **CONTROLS** design, installation and troubleshooting

We are your Industrial Controls Solution Center, specializing in Variable Frequency Drive installation and servicing.

We are factory certified with **ABB, TECO, VACON, WESTINGHOUSE, WEG, SQUARE D, AND CUTLER HAMMER DRIVES**. We can design and build custom control panels to meet any application. We Stock ABB Drives, Teco Drives, and Weg controls including starters up to 150hp on our shelf. Our service department offers 24 hour emergency service performed by trained control Technicians.

### **Sales**

- VFD's
- Turbine Pumps
- Submersible Pumps
- Centrifugal Pumps
- Electric Motors
- Control Panels
- Controls
- Blowers
- Aerators

### **Services**

- Pump system design
- Pump/Motor removal & inst.
- Troubleshooting
- Electrical Contracting
- Electrical service
- Laser alignments
- On site balancing
- Motor testing & repair
- Maintenance contracts
- Thermal Imaging

### **Mods**

- Shaft grounding Ring
- Shaft INPRO Seals
- Space Heaters
- Stator RTD's
- Thermistors / Thermostats
- Bearing RTD's
- Bearing change
- SS Breather Drains
- Alternate Grease
- Epoxy Paint Finish

To see more visit us at:

[www.aawems.com](http://www.aawems.com)

